

The 1-Hepten-3-ols

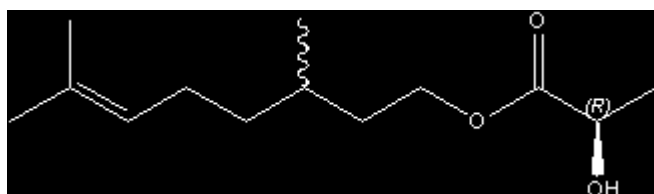
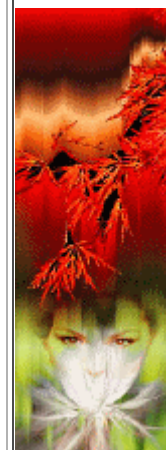
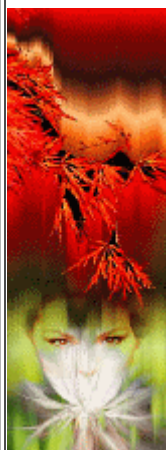
# Chirality & Odour Perception

John C. Leffingwell, Ph.D.

## The Citronellyl lactates

You must have [Java](#) installed to view the molecular visualization on this page

Photo by permission of M. Roudintska - [Art & Parfum](#)

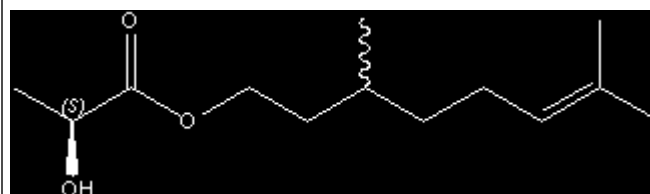


(3RS)-citronellyl (2R)-lactate - a flowery character of lily of the valley type, warm and rich and more natural than rosy alcohols (Rosial Plus<sup>TM</sup>); this enantiomer (2-diastereomers) was introduced into commerce by Rhodia in early 2003 and is described in their literature as "Rosy floral note with a citrus facet. It brings a natural effect."

= (3RS)-7-dimethyloct-6-enyl (2R)-2-hydroxypropanoate

Rhodia's patent indicates that the configuration at the C3 position of the citronellol portion of this molecule is racemic - accordingly we have depicted it as racemic in the 2D-representation and as (R) in the 3D representation (above)

Ref: Storet; Isabelle, Citronellyl and/or dihydrocitronellyl lactates, their preparation and their use, United States Patent 6,458,987,



(3RS)-citronellyl (2S)-lactate - a flowery honeysuckle character closer to citronellol, which gives it a less natural effect than the (3RS)-citronellyl (2R)-lactate.

= (3RS)-7-dimethyloct-6-enyl (2S)-2-hydroxypropanoate

Rhodia's patent indicates that the configuration at the C3 position of the citronellol portion of this molecule is racemic - accordingly we have depicted it as racemic in the 2D-representation and as (S) in the 3D representation (above)

Ref: Storet; Isabelle, Citronellyl and/or dihydrocitronellyl lactates, their preparation and their use, United States Patent 6,458,987, October 1, 2002

Rosial Plus<sup>TM</sup> is a trademark of Rhodia