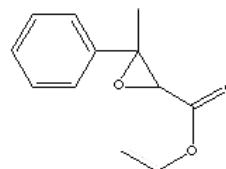


ETHYL METHYLPHENYL GLYCIDATE

PRODUCT IDENTIFICATION

CAS NO	77-83-8
EINECS NO.	201-061-8
FORMULA	C ₁₂ H ₁₄ O ₃
MOL WT.	206.24
H.S. CODE	2918.99.3500
TOXICITY	Oral rat LD50: 5470 mg/kg



SYNONYMS

Aldehyde C-16; Strawberry aldehyde; Ethyl-3-methyl-3-phenylglycidate; 3-methyl-3-phenylglycidic acid ethyl ester; EMPG; Ethyl 2,3-epoxy-3-methyl-3-phenylpropionate; 2,3-Epoxy-3-phenylbutanoic acid ethyl ester; Fraesol; Ethyl 2,3-epoxy-3-phenyl butanoate; Ethyl 3-methyl-3-phenylglycidate, mixture of cis and trans isomers; 3-Methyl-3-phenyl-oxiranecarboxylic acid; alpha,beta-Epoxy-beta-methylhydro cinnamic acid ethyl ester; Ethyl alpha,beta-epoxy-beta-methylhydro cinnamate; 3-Methyl-3-phenyloxiranecarboxylic acid ethyl ester; 2,3-Epoxi-3-fenilbutirato de etilo (Spanish); 2,3-époxy-3-phénylbutyrate d'éthyle (French);

SMILES c1([C@@]2([C@@H](O2)C(OCC)=O)C)ccccc1

CLASSIFICATION Epoxide, Flavor, Perfume ingredient

EXTRA NOTES FEMA No. 2444

PHYSICAL AND CHEMICAL PROPERTIES

PHYSICAL STATE	clear to pale yellow liquid, rose like odor
MELTING POINT	7 - 8 C
BOILING POINT	272 - 275 C
SPECIFIC GRAVITY	1.09 - 1.10
SOLUBILITY IN WATER	Insoluble

pH

VAPOR DENSITY 7.11

AUTOIGNITION

REFRACTIVE INDEX 1.502 - 1.506

NFPA RATINGS Health: 2; Flammability: 2; Reactivity: 0

FLASH POINT > 95 C

STABILITY Stable under ordinary conditions

EXTERNAL LINKS & GENERAL DESCRIPTION

[Wikipedia Linking](#)

[Google Scholar Search](#)

[Drug Information Portal \(U.S. National Library of Medicine\)](#) - Ethyl methylphenylglycidate

[PubChem Compound Summary](#) - Ethyl methylphenylglycidate

[IPCS INCHEM](#) - Ethylmethylphenylglycidate

<http://www.ebi.ac.uk/> - Ethyl methylphenylglycidate

<http://www.ncbi.nlm.nih.gov/> - Ethyl methylphenylglycidate

[Material Safety Data Sheet](#)

<http://toxnet.nlm.nih.gov/>

Hazardous Substances Data Bank - Ethyl methylphenylglycidate

<http://www.chemicalland21.com/>

Flavouring Substances Chemical Group 32 - Epoxides.

Local:

Ethyl methylphenylglycidate is one of common ingredient in perfumery. It's end applications include soap, detergent, beauty care product, household product. (Olfactive Note : aldehydic, intense, sweet, strawberries, floral, fresh)

SALES SPECIFICATION

APPEARANCE	clear to pale yellow liquid
PURITY	95.0% min
SPECIFIC GRAVITY	1.085 ~ 1.095
REFRACTIVE INDEX	1.505 ~ 1.515
ACID VALUE	2 max (mg KOH/g)

TRANSPORTATION

PACKING

HAZARD CLASS 3 (Packing Group: III)

UN NO. 1993

SAFETY INFORMATION

HAZARD OVERVIEW Combustible Liquid, Target Organ Effect, Irritant. Target Organs: Nerves., Testes

GHS

SIGNAL WORD Warning

PICTOGRAMS



HAZARD STATEMENTS H226-H315-H319-H335
P STATEMENTS P261-P305 + P351 + P338
EC DIRECTIVES
HAZARD CODES



RISK PHRASES 10-36/37/38
SAFETY PHRASES 16-26-36/37/39
PRICE INFORMATION

Not Found

The requested URL was not found on this server.

Additionally, a 404 Not Found error was encountered while trying to use an ErrorDocument to handle the request.